

Quick Possession Home

629 QUARRY PARK WAY SE

3133 sqft

4 BEDROOMS • 3.5 BATHROOMS

+ DEVELOPED BASEMENT



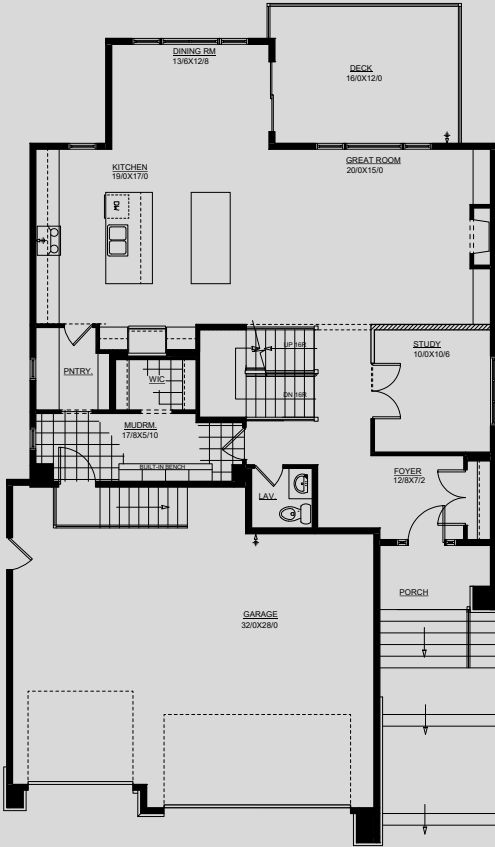
CRYSTAL CREEK
HOMES

FOR MORE INFORMATION, CALL 403.796.6999

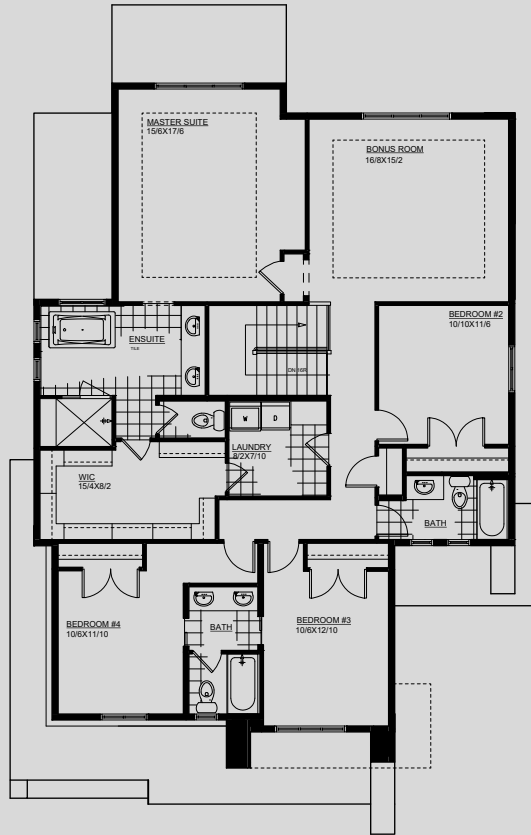
629 QUARRY PARK BLVD SE

3133 sqft

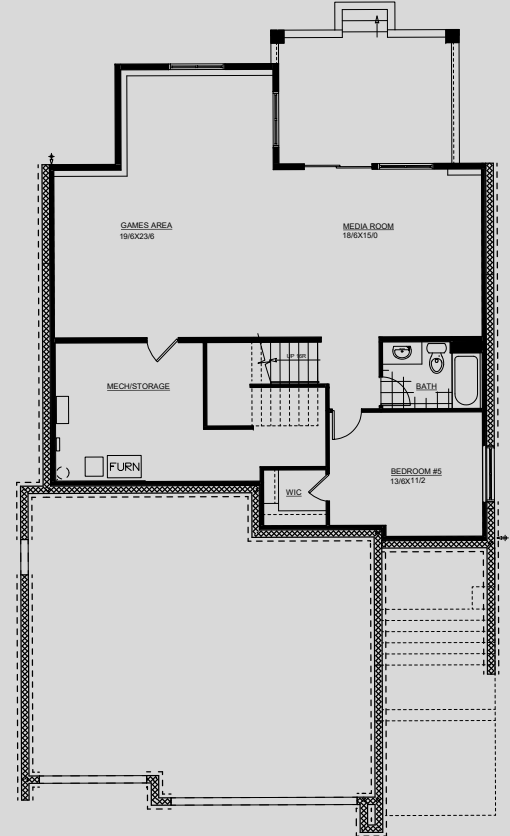
4 BEDROOMS ● 3.5 BATHROOMS



Main Floor - 1406sqft



Upper Floor - 1727 sqft



Lower Dev - 1115 sqft

Get in touch with our team:
Phone: 403.796.6999
Email: quarrypark@crystalcreekhomes.ca

